

Yate Academy

Uniform Policy

Yate Academy is part of the Greenshaw Learning Trust.

The Greenshaw Learning Trust is a charitable company limited by guarantee registered in England and Wales, company number 7633694, registered at Greenshaw Learning Trust, ORU Sutton, Throwley Way, Sutton, SM1 4AF.

Yate Academy Uniform and Equipment Statement 2025 – 2026

Why do we have a uniform statement?

At Yate Academy we take pride in fostering a sense of unity and belonging amongst our students. One of the ways we support this is through our school uniform statement, which helps ensure that all students feel included, equal, and focused on their learning rather than on differences in appearance.

Like many other schools, we have a uniform statement which is very clear and all students are expected to follow. We expect students to take pride in their appearance and emphasise that students should dress in a professional manner.

What are students expected to wear?

Uniform Item	Detail	What this means
Yate Academy Blazer	Navy with embroidered Academy logo	Compulsory item. Must be worn every day. During lessons, teachers will give permission for blazers to be removed when appropriate. (Branded item)
Tie	Academy Tie. Navy and Red stripe	Compulsory item. Must be worn every day. (Branded item)
Blouse/shirt	White school shirt (short or long sleeved)	Compulsory item. Shirts should be tucked in and buttoned up at all times. (Non-branded item)
'V' neck sweater	Plain navy v neck sweater or Plain navy with embroidered Academy logo or plain navy v neck sweater	Optional item as an extra layer. Cannot be worn instead of a blazer.
Trousers	Tailored, full length, plain mid-grey colour.	Optional item. Full length to the ankle. Prohibited trouser styles include but are not limited to - tight, skinny fit, narrow fit, stretchy, low rise, chinos, jeans, drainpipe, Miss Sixty, linen, leggings or cropped styles (Non-branded item)
Shorts	Tailored, mid grey shorts to the knee	Optional Item. In hot weather students can choose to wear plain mid grey tailored shorts (to the knee)
Belts	Plain black	Optional item. Belts should be discreet and have no logos or large buckles. (Non-branded item)
Skirt	Academy skirt, red and navy tartan.	Optional item. Skirts are available in 22, 24 or 26 inch length. Must be on or below the knee. Skirts must not be rolled up or shortened. (Branded item)
Socks	Plain black regular socks, above the ankle	Optional item. Coloured or patterned socks are not acceptable. Socks with branded logos or trainer socks are not acceptable. (Non-branded item)

Shoes	Plain black, low heeled. Leather or similar polish-able material.	Compulsory item. No Canvas or trainer style shoes will be accepted. Shoes must be able to be polished to a shine. (Non-branded item)
Tights	Plain black opaque or flesh coloured.	Optional item. Coloured or patterned tights are not acceptable. Tights should not be worn with socks, students should wear one or the other. Leggings are not permitted. (Non-branded item)
Coat / Jacket	Plain colour, removed on entry to the building	Optional item. No hoodies or sweatshirts allowed, these will be confiscated until the end of the day if worn to school. (Non-branded item)
Bag	Rucksack or bag able to contain A4 folder	Compulsory item. Handbags, messenger bags, canvas tote bags, pouches or shopping bags are not permitted. (Non-branded item)

Further detail – Socks

Please find below images which exemplify our expectations around regular plain black socks

Acceptable Styles	Unacceptable Styles
 <p>Regular length plain black socks above the ankle</p>	 <p>Socks should not be below the ankle Socks should not be mid-calf or knee height Socks must not have a logo.</p>





Further detail – Tights

Please find below images which exemplify our expectations around tights

Acceptable Styles	Unacceptable Styles
 <p>Tights should be plain black opaque or flesh coloured.</p>	 <p>Tights should not be coloured or patterned. Leggings are also not permitted.</p>

Further detail – Trousers and Shorts

Please find below images which exemplify our expectations around trousers being tailored, full length and mid-grey in colour. In hotter weather Plain mid- grey tailored shorts may also be worn.

Acceptable Styles	Unacceptable Styles
 	 

Further detail – Shoes

Please find below images which exemplify our expectations around shoes being plain black and polishable with a low heel.

<p>Acceptable Styles</p>	
---------------------------------	--

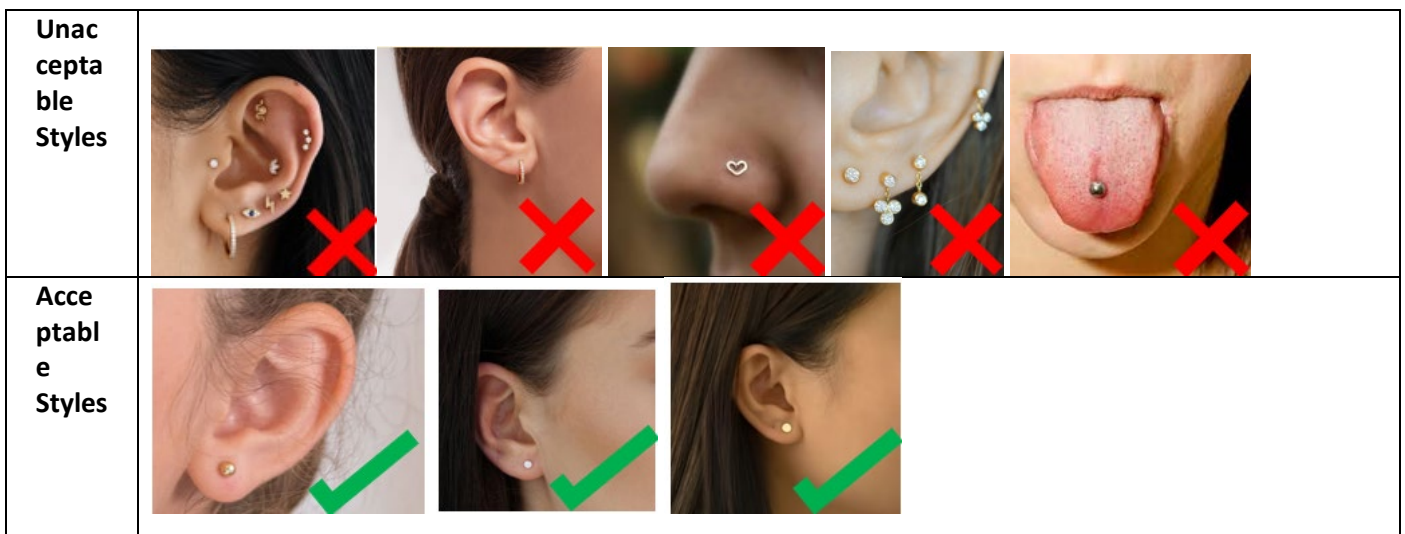


Inappropriate trainers include trainers such as black Nike air force max's, these are not permitted as they are not polishable and do not have a low heel.

Further detail – Jewellery

Students are allowed to wear one simple, plain flat or round stud in plain gold or silver per ear. These are the only items of jewellery accepted. Facial piercings of any kind, including transparent piercing retainers are prohibited. If parents wish for their children to have additional visible piercings during the summer this must be done with ample healing time so that the piercing can be removed during the school day.

The only other jewellery students are allowed to wear is a wrist watch, this cannot be a smart watch. Apart from a watch, students are not allowed to wear anything else on their wrists.



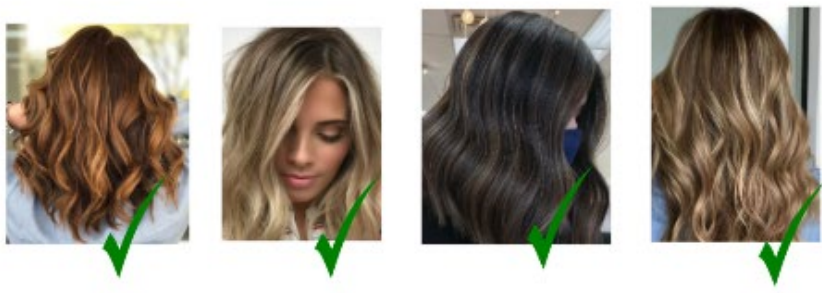
Further detail - Make-Up

Make-up should be discreet and not noticeable, this includes foundation, lipstick, lip-gloss, mascara, blusher, eye shadow, eyeliner and brow liner. False nails, false eyelashes and nail varnish are not permitted in school. Students arriving in school wearing noticeable makeup, nail varnish, false eyelashes or false nails will be asked to remove them. If the student is unable to remove it themselves they will work in our Rebuild provision and families will be contacted to support their child to resolve the issue.

Further detail – Hair

Hair is to be of a natural colour. No decorative lines should be shaved into the hair. If families and students are unsure whether a hairstyle meets the academy policy they should check in advance with the school. The school reserves the right to determine whether hair colouring is considered acceptable.

*Yate Academy adopts the Halo code (<https://www.respect.org.uk/pages/134-the-halo-code>).



Long hair must be tied back for PE, Technology and Science lessons. If students arrive at school with hair that does not meet this standard students will work in our Rebuild provision and families will be contacted to support their child to resolve the issue.

Further detail – Outerwear

Students are advised to wear a coat to school in the winter months. Students will not be allowed to wear hoodies or sweatshirts as coats, these items are banned in school and if seen will be confiscated and not returned until the end of the school day.

Acceptable Styles	Unacceptable Styles
--------------------------	----------------------------



Further detail – Bags

Students must have a rucksack or handbag large enough to fit an A4 folder. Students are expected to bring this with them to school every day.

What are students expected to wear for PE?

All PE kit must be as per the list below.

PE kit should be taken to PE lessons at all times. When students are unable to participate fully in activities they will be expected to assist in some way e.g. officiating, scoring, supporting etc. Parents are strongly advised to name all PE kit items.

*For boys they must wear either the Shorts or navy slim leg track pants listed below, having at least one of these is compulsory.

*For girls they can wear either shorts, skort, navy slim track pants or leggings, having at least one of these is compulsory.

PE Uniform Item	Detail	Boys	Girls
Shorts	Compulsory Item - Navy Blue shorts or	✓	✓

	Optional Item* Navy/Red Yate Academy purchased from Monkhouse		
Skort	Optional Navy non branded or Yate Academy purchased from Monkhouse	X	✓
Navy Slim leg track pants	Optional Item Navy non branded or *Navy purchased from Monkhouse	✓	✓
Girls navy leggings	Optional Item* Navy non branded leggings or Navy leggings purchased from Monkhouse only	X	✓
Sports polo shirt (unisex)	Compulsory Item: Navy/Red Yate Academy purchased from Monkhouse	✓	✓
Ladyfit Sports Polo	Optional Item instead of unisex polo shirt	x	✓
Rugby Shirt	Optional Item: Navy/Red Yate Academy Rugby Shirt – boys only – purchased from Monkhouse	✓	x
Hoodie	Optional Item: Non Branded Navy Hoodie or Navy/Red Yate Academy Hoodie – girls only – purchased from Monkhouse	x	✓
Sports Socks	Compulsory Item: Navy Football socks or	✓	✓

	Optional item: Navy/Red Yate Academy Sport Socks from Monkhouse		
Base layer top	Optional Item: Non branded plain navy or Plain navy purchased from Monkhouse or	✓	✓
Moulded football boots (rubber studs suitable for grass or astro)	Compulsory Item: Any colour	✓	Optional
Sports Trainers	Compulsory Item: Any colour	✓	✓
Shin pads for field sports	Compulsory Item for football and hockey	✓	✓
Mouthguard	Optional Item: Highly recommended for rugby and hockey	✓	✓

Equipment – Stationery

It is very important that students arrive at school every day with all the correct pieces of equipment needed for their learning. Every day students are expected to have the following items in their bag.

- Clear plastic pencil case
- Two black pens
- Two purple pens
- Two pencils
- 15cm clear plastic ruler
- Scientific calculator
- DEAR Book (Year 7 – 10 only)
- Yate Academy Folder (provided)
- Character Card (provided)

Banned Items

The list below is not exhaustive but is a list of items which are not allowed on site, if these items are seen/heard they will immediately be confiscated.

Item	Reason for ban	Sanction
Aerosols	Health & safety including danger of asthmatic reaction	Confiscated and not returned
Caps, Hats and Bandannas	Not part of uniform policy	Confiscated and returned at end of day
Energy Drinks	Health reasons	Confiscated and not returned
Headphones	Prohibited on school premises and such items must be kept out of sight and turned off.	Confiscated and returned at end of day / if repeat offense collected by parents

Hoodies / Sweatshirts (in place of outerwear)	Not part of uniform policy	Confiscated and returned at end of day
Lighters	Health & Safety	Confiscated and not returned
Mobile Phones	The use of mobile phones is prohibited on school premises and such items must be kept out of sight and turned off.	Confiscated and returned at end of day / if repeat offense collected by parents
Smart Watches	Can be used to message other students / access social media	Confiscated and returned at end of day / if repeat offense collected by parents
Vapes	Illegal to possess	Confiscated and not returned

Exemptions from the uniform statement

In cases where medical reasons require a modification to the uniform statement, notice on letter headed paper from a medical professional must be addressed to the Head detailing the reason. The school will then consider whether an adjustment is needed or not.

Please be aware that notes from parents will not be accepted for missing/forgotten items of uniform or medical dispensations.

We will periodically review all uniform policy exemptions and on a case by case basis will ask for updated medical evidence.

What happens if students attend with incorrect uniform?

Uniform is checked at the front door as students arrive to school. If students are wearing an incorrect item of uniform or they need to borrow an item of uniform they will be supported by a member of staff to resolve the issue.

If a student is missing an item of uniform they will be loaned this for the day and will be expected in return to handover their mobile phone in exchange; they will then receive this back at the end of the day.

- If students refuse to change their uniform / remove make up / hand in jewellery, excess/incorrect piercings or hoodies then parents will be contacted and they will work in our Rebuild provision until this issue is resolved
- If students are unable to resolve the uniform issue immediately e.g. acrylic nails, nail varnish, false eyelashes or dyed hair they will work in our Rebuild provision until their parents can collect them to take them resolve the issue

Mobile Phones

The use of mobile phones/iPads and headphones is prohibited on school premises and such items must be kept out of sight and turned off. These will be confiscated if seen/heard.

Banned illegal Items

The list below are items that are not only allowed on site, but are also illegal for students to be in possession. If these items are found on a student onsite this will be treated as serious misbehaviour. Please see our behaviour policy for more detail.

- Alcohol

- Cigarettes/Vapes
- Fireworks
- Illegal drugs
- Knives and Weapons
- Pornographic images
- Stolen Items